

## Renewal Document

### Faculty Advisors Information

- [REDACTED]
  - [REDACTED]
  - [REDACTED]
- [REDACTED]
  - [REDACTED]
  - [REDACTED]

### Ten Core Student Members Information

1. [REDACTED], President
2. [REDACTED], Vice President
3. [REDACTED], Treasurer
4. [REDACTED], Secretary
5. [REDACTED], Peer Engagement Director
6. [REDACTED], Outreach Director
7. [REDACTED], Mentorship Director
8. [REDACTED], Industry Relations Director
9. [REDACTED], Industry Engagement Director
10. [REDACTED], Entrepreneurial Engagement Director

Student Chapter/Department Website Link: <https://asubmes.wixsite.com/asubmes>

### One Free Student Membership Information:

| New Membership or Renewal | Name       | Email      | Graduation Year | Chapter Position |
|---------------------------|------------|------------|-----------------|------------------|
| Renewal                   | [REDACTED] | [REDACTED] | 2025            | President        |



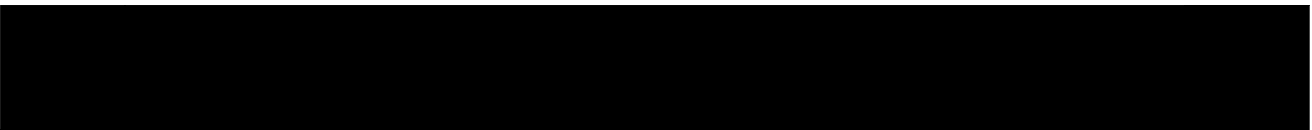
## Chapter Development Report

*Arizona State University's student chapter of  
The Biomedical Engineering Society*

2024-2025

**Corresponding Author:**

**Faculty Advisors:**



### **CDR Summation:**

The Biomedical Engineering Society at Arizona State University continued to support engineering students through professional development, industry, outreach, mentorship, entrepreneurship, and social networking events. For the 2024-2025 academic year, this chapter saw consistent chapter attendance and participation. We hosted engaging and worthwhile events that support our central goal to *provide enriching opportunities for our members so they may gain a real-world perspective of the field of biomedical engineering, develop professionally, and give back to the local community*. Social events are held for students to get to meet new people and find peers within Biomedical Engineering. It is also a great opportunity for students to unwind from classes and participate in fun activities. Outreach events are held to promote engineering, and specifically biomedical engineering, within the community and younger audiences that may include high school students. Volunteering is another key aspect of these activities. Mentorship events allow underclassmen to connect with upperclassmen and graduate students. Activities strive to give students unique, hands-on experiences and a mentor for those adjusting to university life. Industry events are held so students can network with professionals in industry, research, and clinical settings. Entrepreneurship events are held to expose students to the Entrepreneurial Mindset. Examples of events include Ice Cream Socials, Industry Networking Nights, Art and Imaging Night, volunteering at Project Cure, Biomedical

Engineering Faculty Lab Tours, a Pre-Med Talk, Becton Dickinson Facility Tours, and a Mini Design Competition. These events were financially supported by Dean's funding (a funding opportunity made possible by Ira A. Fulton Schools of Engineering at ASU) and a Sponsor Donation from Becton Dickinson. These events enabled students to develop professionally and personally, and introduced the field of biomedical engineers to aspiring researchers, doctors, engineers, entrepreneurs, and teachers. Local membership this year was increased from that of last year, and we maintained high attendance throughout the year for both General Body Meetings and club events. Furthermore, our Chapter recently secured \$3000 worth of funding from Becton Dickinson which was utilized to send 5 members of our Officer Board to the 2024 BMES Annual Meeting in Baltimore, MD. We are seeking to expand our sponsorship pool in the following 2024-2025 cycle and continue hosting novel and impactful events for our students to better integrate them into the world of Biomedical Engineering.

April 4, 2025  
Biomedical Engineering Society (BMES)  
8201 Corporate Drive, Suite 1125  
Landover, MD 207852224

To the BMES National Chapter and the Student Chapter Award Committee,

The 2024-2025 academic year has been a fantastic year for the BMES chapter at Arizona State University. Our club took advantage of both in-person and virtual benefits, making the club hybrid between our various initiatives that allow our members to educate themselves about career paths within the field of biomedical engineering, develop professionally, and give back to our local community.

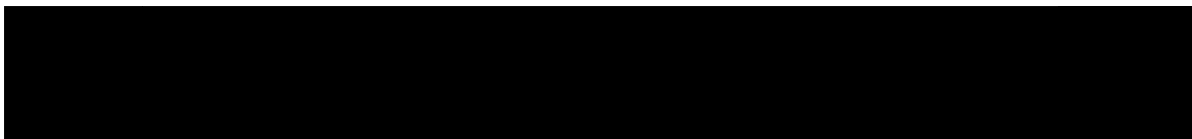
In past years, our monthly general body meetings consisted of a single industry and academic speaker in which they would educate our members on the career paths that exist within biomedical engineering and the steps they took to reach their goals. When the club was entirely online for the duration of COVID-19 school lockdown, we took advantage of Zoom features to incorporate breakout rooms and multiple speakers simultaneously. The past five years, we have strengthened our connections with our Tempe-area companies and research facilities, as exemplified by recent lab tours and our Sponsorship from BD. Our General Body Meetings were in-person and included a Zoom component for the NEW ASU Biomedical Engineering BS Degree Program Online Community for the 2024-2025 academic year allowing for both on and off-campus students to attend.

In pursuing professional development, our organization has continued to improve our project-based mentorship program in which underclassmen can develop hands-on experience working underneath an upperclassmen on a project of their choice. Entrepreneurship events have allowed students to gain more knowledge and experience through 1-1 dialogue with local entrepreneurs and industry professionals. The entrepreneurship coordinator has also been organizing and assembling a design team for the BMES conference and other conferences to give members experience and opportunities through participation. Outreach events have provided our members with the opportunity to share the biomedical engineering mission with local high school students to ensure the torch passes on.

Our community outreach events gained traction this year through partnerships with Southwest Human Development (SWHD; a local nonprofit organization), Bioscience High School in Phoenix, ASU Community Outreach, and Project Cure. These events facilitated volunteer opportunities for our members to contribute to our local community while keeping in mind the BMES mission.

This academic year, we placed an emphasis on ensuring consistent engagement with our membership as we put consistency as a priority over volume. We took consistent feedback from attendees and from our experiences at the 2024 BMES Annual Meeting to tailor events and speakers to their personal and professional objectives. Heading into the 2025-2026 academic year, we are hopeful for the continuation of our officer board, strengthening the organization and prioritizing the club expansion in respect to event coordination and membership involvement. We will continue to push BMES at ASU to be as successful and beneficial to our members as possible and look forward to expanding our organization in the future to positively impact a greater number of students at Arizona State University and across the country.

Sincerely,

A large black rectangular box redacting the signature and name of the sender.

**Table of Contents**

|                                                          |           |
|----------------------------------------------------------|-----------|
| <b>I. Administrative Report</b>                          | <b>5</b>  |
| IA. Abstract                                             | 5         |
| IB. Chapter Officer Information                          | 7         |
| IC. Officer Management Tree                              | 8         |
| IC. Membership Breakdown                                 | 8         |
| ID. Executive & General Body Meetings                    | 9         |
| IE. Examples of Executive Board Meeting Agenda and Notes | 9         |
| IF. Example of Executive Task Management Board           | 10        |
| <b>II. Treasury Report</b>                               | <b>12</b> |
| IIA. Abstract                                            | 12        |
| IIB. Chapter Expenses Breakdown                          | 13        |
| <b>III. Chapter Activities</b>                           | <b>14</b> |
| Abstract                                                 | 14        |
| IIIA. Social Activities                                  | 15        |
| IIIB. Inter-chapter Activities                           | 17        |
| IIIC. Outreach Activities                                | 18        |
| Abstract                                                 | 18        |
| Outreach Activities Breakdown                            | 18        |
| IIID. Mentoring Activities                               | 19        |
| Abstract                                                 | 19        |
| Mentorship Activities Breakdown                          | 22        |
| IIIE. Industry and Professional Development Activities   | 22        |
| Abstract                                                 | 22        |
| Industry Activities Breakdown                            | 22        |
| IIIF. Entrepreneurship Activities                        | 28        |
| Abstract                                                 | 28        |
| Entrepreneurship Activities Breakdown                    | 28        |
| IIIG. Other Initiatives and Activities                   | 30        |
| <b>IV. New BD Corporate Sponsorship</b>                  |           |
| <b>V. National BMES Meeting</b>                          | <b>31</b> |
| <b>VI. Future Directions</b>                             | <b>35</b> |

## I. Administrative Report

### IA. Abstract

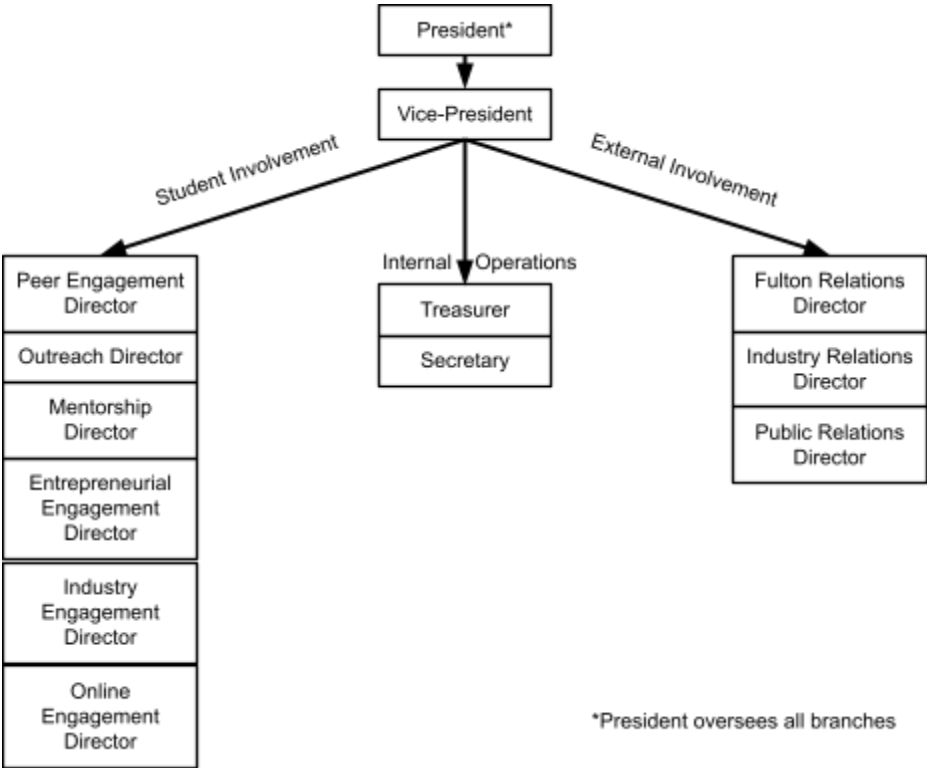
Our BMES chapter is composed of twelve officers, with the new addition of a BMES Online Representative, who support the activities of the organization. Each officer has defined roles and responsibilities to help plan a variety of events and the hierarchical organization is broken down into three branches: internal operations, student involvement, and external involvement. Every two weeks, officer meetings are held to plan events, give updates on current activities, and hear announcements from the President and Vice Presidents. Collaboration is encouraged and these meetings serve as a way for officers to give ideas to one another and see how help can be given as needed. A spreadsheet tracker is used to ensure action items are completed so events can be successfully executed. Information on event description, date/time, and food/supplies needed are recorded, with status updates and notes being recorded during the meetings. Communication is conducted primarily through a WhatsApp group chat, though email is used at times as well. All officers work together to serve the general members of the organization, with a notable example being hosting monthly General Body Meetings (GBMs) to give club updates and invite high-profile guest speakers. There were 7 GBMs in total this academic year. In general, there was a 12.5% increase in the number of local members from the previous year.

### IB. Chapter Officer Information

| Name             | Position                    | Position Description                                                                                                                                                                                                    | Email Address |
|------------------|-----------------------------|-------------------------------------------------------------------------------------------------------------------------------------------------------------------------------------------------------------------------|---------------|
| Naina Misra      | President                   | Oversee all operations, maintain relations with the ASU School of Biological and Health Systems Engineering, preside over all meetings, and manage the overall direction of the organization                            |               |
| Selma Vazquez    | Vice President              | Aid the President in the execution of duties, facilitate officer communication, aid in promoting member engagement, aid in planning events                                                                              |               |
| Aditya Misra     | Treasurer                   | Maintain an accurate balance of funds, manage funds and financial accounts, apply for funding sources, coordinate with officers to fund events, maintain paid membership list                                           |               |
| Kendall Triplett | Secretary                   | Take notes at all meetings of the membership and the executive committee, help maintain membership list, maintain mailing list, manage organization correspondence with members and non-members                         |               |
| Esther Low       | Fulton Relations Director   | Attend all ASU Fulton Student Council meetings, keep track of Dean's Funding points and events, work with Outreach Coordinator to organize volunteer sign ups                                                           |               |
| Camryn Sheen     | Industry Relations Director | Communicate with biomedical engineering professionals, local companies, and graduate programs, coordinate industry & faculty speakers at all meetings, develop industry committee, send out monthly industry newsletter |               |

|                  |                                     |                                                                                                                                                                                                                                                                                                                                                      |  |
|------------------|-------------------------------------|------------------------------------------------------------------------------------------------------------------------------------------------------------------------------------------------------------------------------------------------------------------------------------------------------------------------------------------------------|--|
| Aditi Rao        | Industry Engagement Director        | Organize industry and laboratory/facility tours<br>Coordinate all relevant logistics for transportation<br>Host events pertaining to careers and industry related to Biomedical Engineering                                                                                                                                                          |  |
| Chiya Goyal      | Peer Engagement Director            | Plan and coordinate social events. Work with faculty to provide opportunities for membership to engage in BME topics in a social setting.<br>Coordinate with the secretary and public relations director to promote events. Work with the president and vice president in planning social events.<br>Preside over general body meetings when needed. |  |
| Arnav Wavre      | Mentorship Director                 | Produce applications for mentors, advertise and promote the mentorship program for incoming freshmen, plan events to promote the program and help welcome freshmen into the biomedical engineering community, organize mentor trainings                                                                                                              |  |
| Tytus Wolf       | Outreach Director                   | Coordinate all outreach related events, coordinate high school and middle school visits, work with Fulton Outreach to organize volunteers for ASU sponsored outreach events                                                                                                                                                                          |  |
| Sofia Campagnolo | Public Relations Director           | Work with Fulton communications for media related activities, document and record activities related to this organization, maintain the ASU BMES website and social media accounts                                                                                                                                                                   |  |
| Imaan Naqvi      | Entrepreneurial Engagement Director | Coordinate entrepreneurship related events, serve as a resource for students interested in entrepreneurship, collaborate with the ASU Entrepreneurship + Innovation office                                                                                                                                                                           |  |
| Brian O'Hart     | Online Representative               | Produce online zoom links, host events for ASU Online students, conduct marketing, and updates to BMES members on ASU online.                                                                                                                                                                                                                        |  |

IC. Officer Management Tree





**IC. Membership Breakdown**

| <b>Academic Year</b> | <b>Local BMES Members</b> | <b>National BMES Members</b> | <b>Total Number of Biomedical Engineering Students</b> | <b>Fraction of Students that are Local Members</b> | <b>Fraction of Students that are National Members</b> |
|----------------------|---------------------------|------------------------------|--------------------------------------------------------|----------------------------------------------------|-------------------------------------------------------|
| 2017-2018            | 41                        | 11                           | 726                                                    | 5.65%                                              | 1.52%                                                 |
| 2018-2019            | 134                       | 14                           | 747                                                    | 17.94%                                             | 1.87%                                                 |
| 2019-2020            | 73                        | 22                           | 699                                                    | 10.44%                                             | 3.15%                                                 |
| 2020-2021            | 32                        | 11                           | 650                                                    | 4.92%                                              | 1.69%                                                 |
| 2021-2022            | 30                        | 13                           | 694                                                    | 4.32%                                              | 1.87%                                                 |
| 2022-2023            | 73                        | 12                           | 659                                                    | 11.07%                                             | 1.82%                                                 |
| 2023-2024            | 40                        | 12                           | 654                                                    | 6.12%                                              | 1.83%                                                 |
| 2024-2025            | 45                        | 13                           | 721                                                    | 6.24%                                              | 1.80%                                                 |

**ID. Executive & General Body Meetings**

| <b>Date</b>                     | <b>Type</b>     | <b>Attendance</b> | <b>Fraction of Membership</b> |
|---------------------------------|-----------------|-------------------|-------------------------------|
| August 2024-May 2025 (biweekly) | Executive Board | 12                | 11.25%                        |
| September 9th, 2024             | General Body    | 100               | 76.65%                        |
| October 9th, 2024               | General Body    | 49                | 49.85%                        |
| November 6th, 2024              | General Body    | 19                | 17.45%                        |
| January 22nd, 2025              | General Body    | 20                | 17.90%                        |
| February 19th, 2025             | General Body    | 41                | 47.70%                        |
| March 19th, 2025                | General Body    | 21                | 18.15%                        |
| April 17th, 2025                | General Body    | N/A               | N/A                           |

## IE. Examples of Executive Board Meeting Agenda and Notes

Summer Officer Planning Meeting 7/29/24

Zoom link: <https://asu.zoom.us/j/82514599576>

Present: Naina, Imaan, Selma, Arnab, Aditi, Esther, Kendall, Camryn, Tytus, Aditya

### Agenda: Intros!

- o Name
- o Officer position
- o Year
- o What you've been up to/plan to do this summer
- Officer 'retreat!'
  - o Week of 25th-weekday or weekend?
    - Weekday, sending out a when2meet
  - o Ideas?
    - Board game night with a movie in the background
- Communication
  - o Whatsapp Group Chat
  - o Email
  - o Slack - officers send out announcements for their events
- Google Drive
- Does everyone have access to the FSO Canvas?
  - o New officers need to be added
  - o Check this if an event planning officer for food/supply purchases + P-card use!
- Advertising
  - o Fulton Student Involvement Fair: **5:30pm - 7:30pm on Tuesday, August 20 at Mullett Arena**
    - Selma, Camryn, Naina, Tytus, Chiya
  - o Passport: **Sun, August 18th, 7-10 pm, Student Services Lawn/MU West Cady Mall/WPC Patios**
    - Up to 4 ppl
    - Aditya, Naina
  - o Tabling ideas?
    - Devices → asking Mike
    - Dr. P has some medical devices - Aditi reaching out
      - Machine that swipes student IDs/send out emails
    - Food/candy
    - Selling tshirts
    - Give out goodies if they sign up w/email or insta
    - Games and activities?
- FSO leadership training **Sat 8/24 from 9 am - 4 pm**
  - o Selma, Aditya, Esther, Naina
  - o Aditya - how many do we have left?
  - o 20 smalls and 15 mediums to order
- Officer Polos!
  - o Add sizes to chat
- Schedule GBMs and officer meetings
  - o Thursdays at 6?
  - o When2meet to be sent out
- GBM #1: ~9/12
  - No speakers
  - Games, usually a kahoot/blooket
    - Topic ideas?
      - o BME trivia/fun facts
      - o BME curriculum/faculty trivia
- Future GBM suggestions
  - Speaker panels, rotating tables, etc.?
  - Rotating tables are good/ ppl can ask questions
  - Planning to have faculty speak at the October GBM
- Brainstorm / idea sharing! Potential event ideas?
  - o Organize an event just for professors so students can get a better idea of what BME is
    - Roundtable style with professors from within/out of BME
  - o Have an informal get-to-know your eboard event
  - o Collab events with clubs such as SWE
- Roles: (bold=event planning role, \*\* = potential committee)
  - o Vice President
    - Will need to make a Midfirst trip in August
  - o Treasurer
  - o Secretary
    - Send out first newsletter week of September 2nd
    - Was Maria able to share Brevo information?
  - o Peer Engagement Director\*\*
  - o Outreach Director\*\*
  - o Mentorship Director\*\*
    - Work with Sofia to get advertising materials started/circulating
  - o Fulton Relations Director
  - o Industry Relations Director\*\*
  - o Industry Engagement Director

Zoom link: <https://asu.zoom.us/j/82687104849>

Present: Aditi, Selma, Tytus, Chiya, Imaan, Naina

### Agenda:

- Discuss/plan events for year: [Event & Committee Activity Tracker](#)
- FSO Canvas is up!
- Fill out [Special Event Registry](#) for every event (30 days prior)
- Food/supply requests take 5ever so talk to Aditya at least 2 weeks in advance
- [View classroom availability on Astra](#)
  - o If you would like to reserve a classroom, please email [alina.mcneil@asu.edu](mailto:alina.mcneil@asu.edu).
  - o For SCOB 290 just ask Sobrado
- [Strategic Plan Doc](#)
- [Last year's](#) for reference

### Notes:

- Peer Engagement Director (Chiya)
  - o Lunch with the officers (first or second event after the GBM)
    - 30 - 45 min long
    - Food provided
    - When2meet suggestion
  - o Hands-on workshop (intro to CAD/MATLAB/emails/LinkedIn, etc.)
    - Mid-october
    - Food or snacks
- Outreach Director (Tytus)
  - o Project CURE volunteering (3 hours)
    - 1 per semester
    - No food required
    - Gas/transport
  - o Doctoring Club events (biweekly events w/committee)
    - Connecting Tytus with Jay
    - Gas/transport
  - o Collabs with other clubs
- Industry Engagement Director (Aditi)
  - o Dr. P lab tours (2-3 this semester)
    - Informal meeting to learn about lab culture
    - Light snacks provided
    - Maybe in 286
    - Aditi checking with Dr.P/ASU about regulations
  - o Research panel with grad and PhD students
    - GBM-like setup/roundtable
    - Talk about research, motivations
    - Food maybe
    - Might book design studio depending on ppl
- Collaborating with Camryn, potentially SWE
  - With SWE can get profs from other departments
- BME Professor Roundtable sometime after spring break
- Entrepreneurial Engagement Director (Imaan)
  - o 9/24 Event Design Competition event
    - Finalizing committee members meet n greet
    - Pizza before
  - o ASU E+I Guest Speaker
    - Talk about resources at ASU (venture devils, honors thesis)
    - Dr. Brent Sebold
  - o Mini Design Competition (2/11)
    - Ike's for food
  - o 3/26, bringing in speakers from Skysong
    - Food provided
- ASU is cracking down on reimbursement—do not spend your own money!!
- Aditya can give a presentation about what info he needs / how to submit forms for requests – would this be helpful?
  - o Will ask Aditya to host one
- Let's go over the Strategic Plan!
  - o You have the rest of the hour to fill out your events, ask questions if you have any
  - o Add anything that requires money (food, decor, transport, etc.)
  - o Please finalize by **Sunday, August 26th**

## IF. Example of Executive Task Management Board

| 1  | Role                                | Description                   | Date/Time                                       | Food/Supplies                                       | Send details to Aditya deadline | Status/Notes                                                                                                                                                                                                                                                                                                                                                                                                                                                                                                                                                                                                                                               |
|----|-------------------------------------|-------------------------------|-------------------------------------------------|-----------------------------------------------------|---------------------------------|------------------------------------------------------------------------------------------------------------------------------------------------------------------------------------------------------------------------------------------------------------------------------------------------------------------------------------------------------------------------------------------------------------------------------------------------------------------------------------------------------------------------------------------------------------------------------------------------------------------------------------------------------------|
| 2  | Peer Engagement Director            |                               |                                                 |                                                     |                                 |                                                                                                                                                                                                                                                                                                                                                                                                                                                                                                                                                                                                                                                            |
| 3  |                                     | Officer Mixer                 | 1/23 from 3:30-4:30pm                           | Domino's                                            |                                 | 12/19: Finalized date/time, going to do an RSVP form to get a headcount for food. Social event, short intros, a few games.<br>1/15: Pcard still need to be sent for the officer mixer. Reached out to Dr. Bartelle and he asked for potential dates.                                                                                                                                                                                                                                                                                                                                                                                                       |
| 4  |                                     | Art with Bartelle             | 3/27 at 6 pm in SCOB 290                        | TBD                                                 |                                 | 2/12: Sent Bartelle a list of dates, need to hear back from him. Sending a follow up soon.<br>2/26: Need to send out a pcard request, date finalized                                                                                                                                                                                                                                                                                                                                                                                                                                                                                                       |
| 5  |                                     |                               |                                                 |                                                     |                                 |                                                                                                                                                                                                                                                                                                                                                                                                                                                                                                                                                                                                                                                            |
| 6  | Outreach Director                   |                               |                                                 |                                                     |                                 |                                                                                                                                                                                                                                                                                                                                                                                                                                                                                                                                                                                                                                                            |
| 7  |                                     | Project CURE                  | March Morning/Afternoon                         | N/A                                                 |                                 | 12/19: Looking for a possible date for a second project cure event. Might gage interest at the start of the school year.<br>1/29: Post spring break ideally<br>3/11: Sometime this week going to look at form responses, get data from next GBM, planning for first week of April<br>3/26: Planning for 4/11, going to send out advertisement in the newsletter/SM                                                                                                                                                                                                                                                                                         |
| 8  |                                     | Phoenix Union HS Volunteering | 2/21 @ 10 AM                                    | Possible Gasoline, depending on where the school is |                                 | 12/19: After the previous event at bioscience high school, awaiting for further contacts with Ms. Delp and other schools interested in our presentation<br>1/29: February 21st, Mark reached back out.<br>2/12: Emailing Dr. Burns tomorrow for lab materials. 20 students in a classroom                                                                                                                                                                                                                                                                                                                                                                  |
| 9  |                                     |                               |                                                 |                                                     |                                 |                                                                                                                                                                                                                                                                                                                                                                                                                                                                                                                                                                                                                                                            |
| 10 | Committee                           |                               |                                                 |                                                     |                                 |                                                                                                                                                                                                                                                                                                                                                                                                                                                                                                                                                                                                                                                            |
| 12 |                                     |                               |                                                 |                                                     |                                 |                                                                                                                                                                                                                                                                                                                                                                                                                                                                                                                                                                                                                                                            |
| 13 | Industry Engagement Director        |                               |                                                 |                                                     |                                 |                                                                                                                                                                                                                                                                                                                                                                                                                                                                                                                                                                                                                                                            |
| 14 |                                     | BiolCAS Lab Tour              | Dr. P - 1/24 (3-4) week of Jan Muthuswamy - Feb | Probably won't need food                            |                                 | 12/19: Finalizing a date for lab tours before the end of break. Planning to host 3rd or 4th week in Jan. Had a meeting with Dr. Muthuswamy who didn't want to do it in the fall; hosting in Feb with him.<br>1/15: First tour potentially in 2 weeks for Dr. P. For Dr. Muthuswamy could host the tour Feb 3rd to 21st.<br>1/29: Lab tour on 1/24 went really well. 6 RSVP'd, 5 came. Sent an email to Mike about Muthu lab tour. Gave dates from 2/3 to 2/21 (2:30-4), he's going to check calendar and get back, hopefully getting this set up by next week.<br>2/26: Last Friday's tour had 6 attendees. Mike wants to host further tours next semester |
| 15 |                                     | BME Professors Roundtable     | March 21st from 1:30-3pm @ Hayden C1            | TBD - maybe SWE can cover 50%                       |                                 | 12/19: Planning to host a collab event with SWE<br>1/15: Hosting on March 21st @ MU. Ordering Pizza<br>1/29: MU rooms not available, maybe hosting in lecture hall. Might get Panda instead of pizza.<br>2/21: Limited to \$40, might get Panda Express<br>2/26: BMES just getting dessert. Need to submit pcard request, emailing professors(4-5, 1 from each school)                                                                                                                                                                                                                                                                                     |
| 16 |                                     | BD Tour                       | March 24th 5-6pm                                | N/A                                                 |                                 | 12/19: Sent a thank you email for the last tour.<br>1/29: Waiting to hear back from Peter                                                                                                                                                                                                                                                                                                                                                                                                                                                                                                                                                                  |
| 17 |                                     | Princeton Review              | Week of April 5th - April 9th                   | TBD                                                 |                                 | 12/19: Had a meeting with Adam, going to send a list of documents/deciding on events. End of January, first week of February.<br>1/15: Adam will be making the poster, MCAT review session, all students who attend will get cheat sheets/review cards. Adam is open to hosting more events, Esther will be helping out.<br>1/29: Might do a suture clinic<br>2/26: Most likely online workshop or hybrid, changing the event to MCAT strategy session.<br>3/26: Need to reach out to Adam again                                                                                                                                                           |
| 18 | Entrepreneurial Engagement Director |                               |                                                 |                                                     |                                 |                                                                                                                                                                                                                                                                                                                                                                                                                                                                                                                                                                                                                                                            |
| 19 |                                     | Multilucient Guest Speaker    | ? from 6-7pm in SCOB 290 (tentative)            | Domino's                                            |                                 | 1/15: In the process of finding a guest speaker. Found an ASU professor w/ startup experience. Will be updating event details by Monday.<br>2/26: Date and time are set, sending another email to Dr. Berisha                                                                                                                                                                                                                                                                                                                                                                                                                                              |
| 20 |                                     | Mini Design Competition       | 2/17 from 6-7 pm in SCOB 290                    | Jersey Mike's                                       |                                 | 1/15: Gained a couple of new responses/ppi interested. Reached out to Nick Steele about competitions to get involved in.<br>1/29: Sent out a when2meet in the discord, found a guest speaker (90% confirmed).                                                                                                                                                                                                                                                                                                                                                                                                                                              |

| 1  | Role                                | Description                                                                       | Date/Time                                                          | Food/Supplies                 | Send details to Aditya deadline | Status/Notes                                                                                                                                                                                                                                                                                                                                                                                                                                                                                                                                                                                                                                                                                                                                                                                                                                                                                                                                                                                                                                                                                                                                                                                                                                                                                                                                                                                                                                                                               |
|----|-------------------------------------|-----------------------------------------------------------------------------------|--------------------------------------------------------------------|-------------------------------|---------------------------------|--------------------------------------------------------------------------------------------------------------------------------------------------------------------------------------------------------------------------------------------------------------------------------------------------------------------------------------------------------------------------------------------------------------------------------------------------------------------------------------------------------------------------------------------------------------------------------------------------------------------------------------------------------------------------------------------------------------------------------------------------------------------------------------------------------------------------------------------------------------------------------------------------------------------------------------------------------------------------------------------------------------------------------------------------------------------------------------------------------------------------------------------------------------------------------------------------------------------------------------------------------------------------------------------------------------------------------------------------------------------------------------------------------------------------------------------------------------------------------------------|
| 2  | Peer Engagement Director            |                                                                                   |                                                                    |                               |                                 |                                                                                                                                                                                                                                                                                                                                                                                                                                                                                                                                                                                                                                                                                                                                                                                                                                                                                                                                                                                                                                                                                                                                                                                                                                                                                                                                                                                                                                                                                            |
| 3  |                                     | St. Augustines Guest speaker event                                                | 11/18/2024, 3:00 - 4:00 p.m., SCOB 290                             | Domino's                      |                                 | 9/3: Sending out when2meet to officers<br>10/1: Need to file in p card request<br>10/29: SCOB 290 set!                                                                                                                                                                                                                                                                                                                                                                                                                                                                                                                                                                                                                                                                                                                                                                                                                                                                                                                                                                                                                                                                                                                                                                                                                                                                                                                                                                                     |
| 4  |                                     | BMES Mentorship Event                                                             | 11/22/24, 2:30-3:30 in ECF 120                                     | Domino's                      |                                 | 9/3: Student-run, if a guest speaker bring in someone participating in Fulton activities<br>10/29: Co-hosting this with Arnay, having all mentors join in. Email sent to Elizabeth Tripodi to advertise and get new students to join.                                                                                                                                                                                                                                                                                                                                                                                                                                                                                                                                                                                                                                                                                                                                                                                                                                                                                                                                                                                                                                                                                                                                                                                                                                                      |
| 5  |                                     |                                                                                   |                                                                    |                               |                                 |                                                                                                                                                                                                                                                                                                                                                                                                                                                                                                                                                                                                                                                                                                                                                                                                                                                                                                                                                                                                                                                                                                                                                                                                                                                                                                                                                                                                                                                                                            |
| 6  | Outreach Director                   |                                                                                   |                                                                    |                               |                                 |                                                                                                                                                                                                                                                                                                                                                                                                                                                                                                                                                                                                                                                                                                                                                                                                                                                                                                                                                                                                                                                                                                                                                                                                                                                                                                                                                                                                                                                                                            |
| 7  |                                     |                                                                                   |                                                                    |                               |                                 | 9/24: Planning on the week of October 21st, will send out information on time.<br>10/1: Contacted my committee and planning on October 25th for Project CURE, at GBM will put up an interest form<br>10/22: Got an official date for the event on November 2nd<br>11/4: The project CURE event went well and had good attendance. Note to take pictures for next time so we can display them                                                                                                                                                                                                                                                                                                                                                                                                                                                                                                                                                                                                                                                                                                                                                                                                                                                                                                                                                                                                                                                                                               |
| 8  |                                     | Phoenix Union HS Volunteering Event                                               | Fall/Spring<br>12/3 at 10 AM                                       | N/A<br>Presentation Materials |                                 | 11/21: Date and time set for the event. Currently in the process of recruiting students via flyer to attend.                                                                                                                                                                                                                                                                                                                                                                                                                                                                                                                                                                                                                                                                                                                                                                                                                                                                                                                                                                                                                                                                                                                                                                                                                                                                                                                                                                               |
| 9  |                                     |                                                                                   |                                                                    |                               |                                 |                                                                                                                                                                                                                                                                                                                                                                                                                                                                                                                                                                                                                                                                                                                                                                                                                                                                                                                                                                                                                                                                                                                                                                                                                                                                                                                                                                                                                                                                                            |
| 10 | Committee                           |                                                                                   |                                                                    |                               |                                 |                                                                                                                                                                                                                                                                                                                                                                                                                                                                                                                                                                                                                                                                                                                                                                                                                                                                                                                                                                                                                                                                                                                                                                                                                                                                                                                                                                                                                                                                                            |
| 11 |                                     |                                                                                   |                                                                    |                               |                                 |                                                                                                                                                                                                                                                                                                                                                                                                                                                                                                                                                                                                                                                                                                                                                                                                                                                                                                                                                                                                                                                                                                                                                                                                                                                                                                                                                                                                                                                                                            |
| 12 |                                     |                                                                                   |                                                                    |                               |                                 |                                                                                                                                                                                                                                                                                                                                                                                                                                                                                                                                                                                                                                                                                                                                                                                                                                                                                                                                                                                                                                                                                                                                                                                                                                                                                                                                                                                                                                                                                            |
| 13 | Industry Engagement Director        |                                                                                   |                                                                    |                               |                                 |                                                                                                                                                                                                                                                                                                                                                                                                                                                                                                                                                                                                                                                                                                                                                                                                                                                                                                                                                                                                                                                                                                                                                                                                                                                                                                                                                                                                                                                                                            |
| 14 |                                     |                                                                                   |                                                                    |                               |                                 |                                                                                                                                                                                                                                                                                                                                                                                                                                                                                                                                                                                                                                                                                                                                                                                                                                                                                                                                                                                                                                                                                                                                                                                                                                                                                                                                                                                                                                                                                            |
| 15 |                                     | Research Panel with PhD/ Graduate Students + BME Lab Tours                        | October-November (before/after Thanksgiving), 5-7 pm, Location TBD | Target cookies/lemonade       |                                 | 9/3: Dr. Pizziconi is onboard, attendees can't interfere with ongoing experiments, giving refreshments after the meetings; hosting one end of September, making google form and highlighting at GBM, reaching out to other professors<br>10/1: Mike is happy to schedule a lab tour in Muthuswamy's lab. Dr. P wants us to wait until people are settled in. Lab tours will probably start late October/early November. Muthuswamy tours planning to start mid-Oct, go into Nov. Setting up a meeting with Mike for Muthuswamy lab tours. Going to postpone research panel to Spring.<br>10/15: Reached out to Peter about organizing a lab tour- did not receive a reply- followed up with him and waiting for a response<br>BioCAS lab tour: 3 tours biweekly, hopefully starting next Friday (need confirmation from the lab group- post is ready and will send to Sofia as soon as the lab confirms it)<br>Dr.Muthuswamy is ready for a lab tour, but suggested if not this semester, scheduling the tours in the Spring might work as well<br>10/29: Dr. P says we're good to start next Friday 4:00pm - 5:00pm (biweekly). Sent an email to other lab group to confirm with them. Going to send flyer to Sofia for the Instagram.<br>11/12: 11/22 event is still on. Only good day to reschedule is right after thanksgiving which won't work, so moving this to next semester. Sending out reminders to everyone who is attending for confirmations so carpools can be figured out. |
| 16 |                                     | BD Lab Tour                                                                       | 11/15 at 5 PM                                                      | N/A                           |                                 | 11/21: Event details were figured out in time, 6 students able to be accommodated via carpooling with the others having to find their own rides. Event went well and pictures were sent to Sofia/Kendall.                                                                                                                                                                                                                                                                                                                                                                                                                                                                                                                                                                                                                                                                                                                                                                                                                                                                                                                                                                                                                                                                                                                                                                                                                                                                                  |
| 17 | Entrepreneurial Engagement Director |                                                                                   |                                                                    |                               |                                 |                                                                                                                                                                                                                                                                                                                                                                                                                                                                                                                                                                                                                                                                                                                                                                                                                                                                                                                                                                                                                                                                                                                                                                                                                                                                                                                                                                                                                                                                                            |
| 18 |                                     | Design Competition: Nature Ultimate Bioengineering Challenge (Committee Meeting?) | October TBD, 5:00 - 6:00 p.m. in SCOB 290                          | Domino's                      |                                 | 9/17: 1st Design Team on 9/27<br>10/29: not planning to host an in-person one this semester, thinking about hosting one in January for next semester.                                                                                                                                                                                                                                                                                                                                                                                                                                                                                                                                                                                                                                                                                                                                                                                                                                                                                                                                                                                                                                                                                                                                                                                                                                                                                                                                      |
| 19 |                                     | ASU Entrepreneurship + Innovation (E+I) Guest Speaker Dr. Brent Sebold            | 11/14/2024, 6-7 pm, Virtual                                        | N/A                           |                                 | 10/29: Last heard from Selma that we're currently in the process of reaching out to Brent Sebold. There is a conflict on 11/11 so the event will be pushed back to Wednesday. This date is not finalized as I am going to reach out to Selma for more information. I intend to have a speaker, time, and date finalized this week. Sometime around 11/14 will be available, most likely on Zoom.<br>11/21: Imaan updated that the event went well. Advised to send pictures for advertising and add attendance list to the drive.                                                                                                                                                                                                                                                                                                                                                                                                                                                                                                                                                                                                                                                                                                                                                                                                                                                                                                                                                          |

Above is an example of usage of a spreadsheet tracker in Google Sheets to organize tasks for each officer. The chapter used this platform to manage tasks and give updates during biweekly officer meetings. A WhatsApp group chat was supplementarily used as a way to communicate with one another and keep tasks on time. Additional information and updates were sent in the group chat or to the President as needed or requested.

## **II. Treasury Report**

### **IIA. Abstract**

The Biomedical Engineering Society at ASU utilized Dean's funding (a funding opportunity made possible by Ira A. Fulton Schools of Engineering at ASU) and revenue account funds (money from the club's revenue account managed by the Fulton Schools of Engineering at ASU) as well as possible donations from our donation account to fund events held by this organization. In order to secure Dean's funding, the BMES chapter submitted a budget proposal at the beginning of the Fall 2024 semester. Each student organization is able to apply to various tiers of funding, ranging from \$0-\$10,000 per year, where this year we received \$10,000. In addition, it should be noted that Dean's Funding funds events that align with at least one of the four criteria of the IRA's standards: (1) Interaction - promote interaction between student and faculty, staff, or industry personnel, (2) Recognition - bring familiarity to the Ira A. Fulton Schools of Engineering, (3) Academic - increase engineering and technical education to students, (4) Student Mentoring - enable peer-to-peer student mentoring. We also sell t-shirts, which are included in our local membership fee of \$10, to fundraise for our club in case of emergency funding needed. In order to remain eligible for Dean's funding and in compliance with expectations, student organizations must earn a set number of Dean's points during the academic year by volunteering in Fulton events, such as the Fulton Schools Career Fair. Student organizations must also abide by the strict regulations set by the Fulton Engineering School when requesting for funding. The following tables summarize the funding allocation and expenditure made for 2024-2025.

**IIB. Chapter Expenses Breakdown****1. Fulton Schools Dean's Funding**

The Biomedical Engineering Society at ASU was awarded Dean's Funding through the Fulton School of Engineering Student Engagement office. These funds were used on events that complied with regulations set by the Student Engagement office and aligned with the IRA's standard. The following summarizes the expenditures made using Dean's Funding.

| <b>Name of Activity</b>       | <b>Total Cost</b> |
|-------------------------------|-------------------|
| Lunch & Meet                  |                   |
| BioICAS Lab Tour              |                   |
| Meet the Mentors              |                   |
| Meet & Greet the Officers     |                   |
| T-Shirts                      |                   |
| Design Team Meeting           |                   |
| Food at General Body Meetings |                   |
| <b>Total Cost</b>             |                   |

| <b>Name of Activity</b> | <b>Total Cost</b> |
|-------------------------|-------------------|
| Travel                  |                   |

**2. BMES Revenue Account**

The Biomedical Engineering Society utilized revenue account funds from the Fulton School of Engineering. The financial details are summarized below:

| <b>Name of Activity</b> | <b>Total Cost</b> |
|-------------------------|-------------------|
| <b>Total Cost</b>       | \$0               |

**3. BMES Donation Account**

The Biomedical Engineering Society utilized donation account funds from the Fulton School of Engineering. The financial details are summarized below:

| <b>Name of Activity</b>     | <b>Total Cost</b> |
|-----------------------------|-------------------|
| General Body Meetings       |                   |
| Professor Round Tables      |                   |
| Industry Networking Night   |                   |
| Welcome Back Officers Mixer |                   |
| <b>Total Cost</b>           |                   |

### **III. Chapter Activities**

#### **Abstract**

Our organization has a variety of different types of events to cater to the interests of our members. Our main categories of events are social, outreach, mentorship, industry, and entrepreneurship events. Social events are held for students to get to meet new people and find peers within Biomedical Engineering. It is also a great opportunity for students to unwind from classes and participate in fun activities. Outreach events are held to promote engineering, and specifically biomedical engineering, within the community and younger audiences that may include high school students. Volunteering is another key aspect of these activities. Mentorship events allow underclassmen to connect with upperclassmen and graduate students. Activities strive to give students unique, hands-on experiences and a mentor for those adjusting to university life. Industry events are held so students can network with professionals in industry, research, and clinical settings. This includes bringing in guest speakers for monthly General Body Meetings, as well as other information sessions. Entrepreneurship events are held to expose students to the Entrepreneurial Mindset, connect them with professionals with experience in start-up businesses, and apply classroom knowledge in making a design project. Our organization also hosts events with BMES chapters at other universities and engineering organizations within Arizona State University to increase opportunities for networking.



### III.A. Social Activities

This year's social activities were designed to strengthen the sense of community within the biomedical engineering major by providing welcoming, engaging opportunities for students to connect. Our goal was to host at least two social events each semester that would either foster friendships, introduce professional and academic opportunities, or encourage meaningful dialogue in a relaxed setting. In total, **four events** were organized during the academic year, with one bonus event at the end-of-year capstone symposium. These included a professional networking meet-and-greet, a mentorship lunch, a creative evening of art and conversation with a BME professor, and a community-building officer mixer. All events prioritized inclusivity, student connection, and low-pressure environments to form networks and build bridges across classes and interests within the BME major.

#### 1) Meet & Greet with University of St. Augustine's Graduate School of Health

**Date:** September 23, 2024

**Location:** SCOB 290

**Attendance:** 2

**Description:** Students engaged in a Q&A session and presentation with a representative from the University of St. Augustine for Health Sciences. This event gave attendees a closer look into various graduate health science programs, the admissions process, and strategies for success in applying. It was both a valuable academic exploration and a relaxed networking opportunity.

#### 2) Mentor-Mentee Lunch (Mentorship Program)

**Date:** November 22, 2024

**Location:** ECF 120

**Attendance:** 10

**Description:** Mentors and mentees from the BMES Mentorship Program came together for a casual lunch, where they discussed academic and personal goals, exchanged advice, and built stronger support networks in a welcoming environment.

#### 3) Welcome Back Officer Mixer

**Date:** January 16, 2025

**Location:** ECF 130

**Attendance:** 5

**Description:** Members had the opportunity to meet BMES officers in an informal setting, ask questions about the major, and learn about upcoming events and opportunities. Games and snacks made the event lighthearted and approachable, encouraging both new and returning members to feel part of the BMES community.



#### 4) Getting Involved at ASU (Mentorship program)

**Date:** January 31, 2025

**Location:** Online (zoom)

**Attendance:** 8

**Description:** As part of the BMES Mentorship Program, we hosted an interactive event focused on helping students explore the many opportunities available at ASU. Attendees learned about impactful programs such as GCSP, FURI, SURI, Venture Devils, EPICS, and FACE, as well as various clubs and networking events. The session aimed to empower mentees with the knowledge and confidence to get involved early, build connections, and make the most of their ASU experience.

#### 5) Art with Bartelle

**Date:** March 19, 2025

**Location:** ECF 130

**Attendance:** 15

**Description:** This now-annual favorite returned for another round of creativity and connection. Guided by Professor Benjamin Bartelle, students explored the themes of bioluminescence and phosphorescence through art, while engaging in meaningful conversations about research, careers, and life in BME. This event consistently draws high participation and has become a signature BMES experience.

#### 6) Symposium Ice Cream Social

**Date:** May 2, 2025

**Location:** SDFC

**Attendance:** NA

**Description:** Held in conjunction with the BME Capstone Symposium, this event allowed underclassmen and non-presenting students to engage with capstone teams, evaluate student-designed games, and enjoy a treat while learning about real-world BME applications. The ice cream added a fun and casual element to an academically significant event, helping foster department-wide camaraderie.

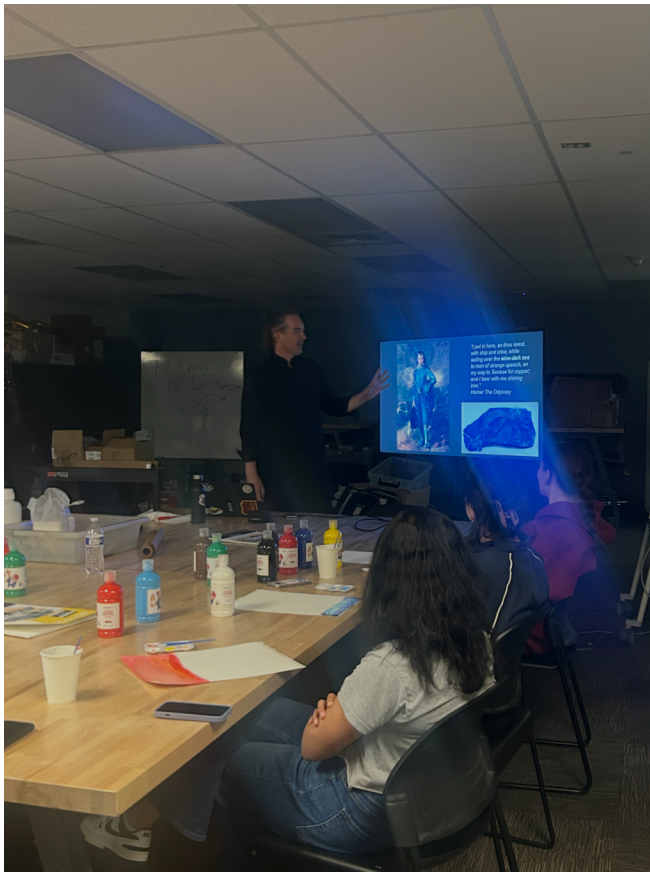


Table: Cost Breakdown for Social Events for 2024-2025 Academic Year

| <b>Event</b>                                                                         | <b>Cost</b>     |
|--------------------------------------------------------------------------------------|-----------------|
| <b>Meet &amp; Greet with University of St. Augustine's Graduate School of Health</b> | \$65.84         |
| <b>Mentor-Mentee Lunch (Mentorship Program)</b>                                      | \$65.84         |
| <b>Welcome Back Officer Mixer</b>                                                    | \$65.84         |
| <b>Art with Bartelle</b>                                                             | \$24.87         |
| <b>Symposium Ice Cream Social*</b>                                                   | N/A             |
| <b>Total:</b>                                                                        | <b>\$310.01</b> |

**\*Cost covered by ASU SBHSE Symposium Organizers: Ding Ding Zheng**

### **IIIB. Inter-chapter Activities**

Inter-chapter activities for the 2024-2025 school year involved guest speakers from school faculty and industry members. Guest speakers were involved in every BMES general body meeting, gave out information about programs from their department, and answered questions from students attending the meetings. Guest speakers represented Mayo Clinic Alix School of Medicine, Becton, Dickinson and Company (BD), Teach for America, and more. Every month there were events planned as part of the BMES chapter activities, including mentorship program events, networking nights, collaboration events with other ASU engineering organizations, and financial literacy workshops. The Fulton Student Organization allows the submission of Dean's points for funding once per month. BMES submitted points once per month and currently aims to receive the highest amount of funding from the university. Within BMES in ASU, board members held bi-weekly meetings to discuss plans and strategies for the BMES events and how to bring in more members. Furthermore, a Whatsapp group chat was established to facilitate communication among all board members. After every semester, there is a board retreat, this is organized by the board members and is usually held at different locations and different times in order to accommodate and have everyone attending the retreats.

### III.C. Outreach Activities

#### Abstract

The goal of the BMES outreach this year was to reach the community and spread awareness about Biomedical Engineering. The main way that was planned to do this was through local community visits to high schools around the phoenix area. Days were planned out in advance with local engineering high school teachers to send representatives from BMES to go and educate about Biomedical Engineering at ASU.

The first high school was Bioscience High School where roughly 20 kids came and learned about BME through hands-on activities as well as a presentation with questions throughout the hour-long experience. The second high school was Metro Tech High School where roughly 30 kids participated in a presentation and open question time for about 1.5 hours and also experienced hands-on activities. These two high schools both were the target for this year's outreach of BMES.

#### Outreach Activities Breakdown

##### 1. Bioscience High School Visit

- a. Date: December 3, 2024
- b. Location: Bioscience High School
- c. Attendance: 2
- d. Description: 2 BMES members led hands on activities and a presentation to about 20 high school kids on BME and ASU

##### 2. Metro Tech High School Visit

- a. Date: February 21, 2025
- b. Location: Metro Tech High School
- c. Attendance: 3
- d. Description: 3 BMES members presented for an hour and a half about Biomedical Engineering and ASU to 30 high school Juniors and Seniors



### IIID. Mentoring Activities

#### Abstract

The objective of ASU's Biomedical Engineering Society chapter is to support freshmen in their transition to university life and enhance their overall experience in the School of Biological Health Systems Engineering. While the curriculum offers numerous opportunities to explore diverse engineering concepts and engage in hands-on design, a more tailored and mentored approach enables students to delve deeper into their individual interests and develop skills earlier in their college journey. Moreover, the mentorship program fosters camaraderie and connections among students and staff within the Fulton School of Engineering.

The program's structure underwent major modifications between the fall and spring semesters but retained its primary focus on providing mentorship for freshmen through experienced BME students. In the fall, 5 mentors were recruited. In the fall semester, we organized an event for students to meet all the mentors. We revamped the program so students will attend 4 workshops regarding how to get opportunities and skill-based workshops. After completing the said 4 workshops they will receive a certificate for their participation in the program.

Plans for setting the program up:

- First
  - Make a flier and a google form to recruit mentors and mentees with their contact email and phone number
- Second
  - Make an event for all the mentees and mentors to meet up
    - Mentors would prepare a summary of the workshop
    - Mentees would go around and check out the tables for all the different mentors and sign up for the workshop they found interesting
- Third
  - Attend the workshops, give feedback and mark attendance.

#### Mentorship Activities Breakdown

##### **Meet the Mentors**

- a. Date: 10/10/24
- b. Location: Zoom
- c. Attendance: 8 people
- d. Description:

A meet session was held between the mentors and mentees where any questions relating to BME, Getting involved, internships, and work experience were discussed. This served as an ice breaker to build connections between mentors and mentees.

| Date            | Time             | Event Name                                        | Location                |
|-----------------|------------------|---------------------------------------------------|-------------------------|
| 31st Jan        | 2pm-3pm          | Getting Involved workshop                         | Online                  |
| 17th Mar        | 12:45pm - 2:45pm | Circuits                                          | TBD                     |
| 11th Apr        | 2pm-3pm          | LinkedIn Resume Workshop                          | TBD                     |
| 28th Mar        | 5pm - 6pm        | Getting an internships                            | Online                  |
| 30th Apr        | 5pm - 6pm        | Industry vs Academia                              | Online                  |
| 4th Apr         | 3pm - 4pm        | Capstone: How it works                            | TBD                     |
| 8th Apr         | 5:00-7:00 pm     | Industry Networking Night                         | MU 228 Cochise Ballroom |
| 24th Jan        | 5pm-6pm          | Scholarships: A Guide to Engineering Scholarships | Online                  |
| 27th March      | 3 pm - 4 pm      | Art with Bartelle                                 | In-person               |
| B/w 02/03-02/21 | TBD              | BME Lab Tour (Neural Microsystems Lab)            | Online/In-person        |
| 24th March      | 5 pm             | BD Tour                                           | BD Tempe Campus         |



Neural Microsystems Lab Tour Flyer



### III.E. Industry and Professional Development Activities

#### Abstract

The primary goal of the Industry and Professional Development Activities section of our chapter is to provide our members with an opportunity to learn about possible career paths within biomedical engineering and to engage, on a personal level, with local industry members about their experiences. In the past, this was accomplished through industry and faculty speaker presentations held at our general body meetings and BMES Industry Newsletter to boost interactiveness and interpersonal communication. This year we implemented a completely in-person aspect to our industrial and professional development sections. We expanded the industrial reach of the companies we connected with as an organization. At the beginning of the semester, a survey was taken by the majority of the members that asked what types of speakers would appeal to them, both specific companies and general types of interest in professional connections. The consensus was an interest in large biotech companies as well as local startups, and a specific interest in a large clinic company. The variety of industry included in events was increased with additional reach to biotechnology and research companies in order to provide members with a perspective on the diverse careers possible from obtaining a degree related to biomedical engineering.

#### Industry Activities Breakdown

##### 1. Faculty and Industry Speaker Presentations

Throughout this year, our General Body Meetings had a mixed format between speakers. Typically, each meeting had two groups of speakers from different organizations or companies, and they gave a presentation on their group and their role, followed by a session of Q&A. Members that attended the general body meetings were very interested in how the speakers gained their positions in the companies or organizations, and what they themselves could do to reach that level of achievement. Other questions involved how the speakers liked their roles. These sessions were extremely helpful for our members because they help forge connections with the speakers and make them more likely to be successful in their future careers and paths. Typically the different speakers chosen to complement each other. Speakers picked together often discussed two different aspects of a similar grouping. For example, speakers were chosen from the same company in order to discuss different roles they had inside the company or faculty would discuss different research in their field. All speakers had around 30 minutes to give a presentation and answer questions. However, no matter the style of presentation, there were a few things that were constant throughout the speaker presentations. While given a rubric of what a typical presentation was like, each speaker had free reign on presenting about an industry or research topic. While many speakers used a standard lecture style, few speakers chose different routes, including storytelling and using props. Many speakers stay after their presentations to have one on one conversations with members that take interest in the organization, company, or research that the speaker participates in. While this is helpful and progressive for our members, future development should be done to expand our connections beyond the immediate area around campus and expose our members to a greater variety of careers in the biomedical industry. This will broaden the pool of potential speakers and broaden our organizations exposure to industry professionals.

**Members:** All BMES General Body Members and students interested in joining the club.

| Speakers, Title                                                                                                                                                                                                                                                                                                                                 | Meeting Format     | Date, Time, Location                     | Attendance |
|-------------------------------------------------------------------------------------------------------------------------------------------------------------------------------------------------------------------------------------------------------------------------------------------------------------------------------------------------|--------------------|------------------------------------------|------------|
| <b>No Speakers</b>                                                                                                                                                                                                                                                                                                                              | Seminar            | September 10th, 2024,<br>6:00 PM, MU     | 100        |
| <b>Dr. Xiao Wang</b><br>Associate Professor, School of Biological and Health Systems Engineering<br>Research focus on synthetic and systems biological engineering<br><b>Dr. Emma Frow</b><br>Associate Professor, School of Biological and Health Systems Engineering<br>Research focus on governance and regulation of emerging biotechnology | Presentati on/ Q&A | October 9th, 2024,<br>6:00 PM, SCOB290   | 49         |
| <b>Annie Martin &amp; Mariah Elgin</b><br>Engineers, W.L. Gore<br><b>Charles Wickens</b><br>Section Head of Healthcare Technology Management, MayoClinic                                                                                                                                                                                        | Presentati on/ Q&A | November 6th, 2024,<br>6:00 PM, SCOB290  | 19         |
| <b>Dr. Antonio Garcia</b><br>Retired Biomed Engineering Professor, Current National Marrow Donation Program Employee<br><b>Aubrie Vargas</b><br>Account Manager with National Marrow Donation Program                                                                                                                                           | Presentati on/ Q&A | January 22nd, 2025,<br>6:00 PM, SCOB290  | 20         |
| <b>Katelyn Keberle</b><br>Engineer, Becton Dickenson<br><b>Krishnaa Pradhan</b><br>Teach for America Representative                                                                                                                                                                                                                             | Presentati on/ Q&A | February 19th, 2025,<br>6:00 PM, SCOB290 | 41         |
| <b>Sadikshya Rijal &amp; Sergio Serrato-Arroyo</b><br>Graduate Students and Officers of Nucleate<br><b>Lia Wolfe</b><br>SkySong Innovations                                                                                                                                                                                                     | Presentati on/ Q&A | March 19th, 2025,<br>6:00 PM, SCOB290    | 21         |
| <b>ASU BME MS Mayo IMPACT Program</b><br><b>Kristen Kaus</b><br>Recruiter at Tgen                                                                                                                                                                                                                                                               | Presentati on/ Q&A | April 17th, 2025,<br>6:00 PM, SCOB290    | TBD        |

## 2. Specialized Industry Events

The industry events that were organized during this academic year were catered to introducing ASU BME and Engineering students to (a) the biomedical research being conducted in the labs at ASU and (b) the real-world industry applications of engineering in healthcare. Eight industry/research-based events were conducted throughout the academic year. The first event was a Meet & Greet with Shaun Victor and Trixis Del Rosa from Edwards Lifesciences, who briefed the students about the impact that the company is making on improving patient lives through innovations in cardiovascular technologies along with upcoming summer internship opportunities. The second series of events was the BioICAS Lab tours in Dr. Vincent Pizziconi's lab that aimed to introduce interested freshman, sophomores, juniors, and seniors to the research being conducted in his lab along with the opportunity to connect with current undergraduate/graduate researchers; through this event, two undergraduate of the six students found interests in the projects in his lab and began shadowing lab members. Two Becton-Dickinson (BD) lab tours were conducted during the Fall 2024 and Spring 2025 semesters; the focus of this event was to provide engineering students a perspective on the resources, technologies, and projects that medical device companies work on and make a positive impact on the current technologies for diagnostics and therapeutics. Students had the opportunity to connect and network with BD representatives about their day-to-day responsibilities; the products that BD produces and their applications; potential internship opportunities; and the variety of career paths open to engineering alumni in the domains of manufacturing, management, regulatory, and R&D.

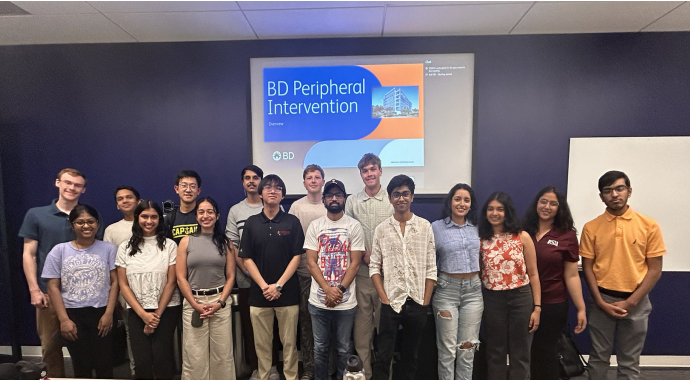
The Neural Microsystems Lab Tours followed a similar format to the BioICAS lab tours as they aimed at introducing engineering students to a different field of biomedical research – neuroscience. The tour was preceded by an introductory overview by Dr. Mike D'Saachs about the theme, project areas, and lab members. The students had the opportunity to explore the softwares and hardwares utilized in professional research labs in addition to learning common and good lab practices; by shadowing the current undergraduate and graduate researchers in the lab, they were able to gauge an understanding of the research area that appealed to them in the lab. One student was able to secure a research position in the Neural Microsystems Lab after attending the tour – successfully satisfying the aim of the tour. Finally, the Panel with Professors event was a collaborative event with the Society of Women Engineers (SWE) at ASU. The focus of this event was to provide engineering students at ASU a perspective on the journey that Fulton professors followed to attain the positions they currently hold. Students were able to interact with Dr. Sydney Schaefer, Dr. Bradley Greger, and Dr. Helen Chavez about advice on navigating their career paths, current industry & research trends, and potential research opportunities in their research labs. Productive discussions allowed the students to break the ice with professors that teach them their coursework, allowing for smooth conversations and establishing networks.

The main aim of the industry/research events was to help engineering students in understanding the scope of biomedical research and industry roles; introducing them to professionals and current researchers provided them a perspective of the application of their coursework in the real world.

**Audience:** *Members and students interested in gaining insights for pursuing specific career roles like Quality & Regulatory Engineers and research areas in biomedical engineering such as orthopedics, neuroscience, etc.*

| Event                                        | Speaker(s), Title                                                                                          | Date, Time, Location                           | Attendance |
|----------------------------------------------|------------------------------------------------------------------------------------------------------------|------------------------------------------------|------------|
| Edwards LifeSciences – Industry Meet & Greet | <b>Shaun Victor</b><br>Technical Development<br>Program Engineer                                           | September 17, 2024<br>6:00 PM, SCOB 290        | 12         |
| BioICAS Lab Tour 1                           | <b>Dr. Vincent Pizziconi,</b><br>Principal Investigator of<br>BioICAS Lab, Associate<br>Professor of SBHSE | November 8, 2024 5:00 PM,<br>SCOB 274          | 5          |
| BioICAS Lab Tour 2                           | <b>Dr. Vincent Pizziconi,</b><br>Principal Investigator of<br>BioICAS Lab, Associate<br>Professor of SBHSE | January 24, 2025<br>5:00 PM, SCOB 274          | 6          |
| Becton Dickinson<br>Facility Tour            | <b>Dr. Peter Crapo</b><br>R&D Staff Engineer -<br>Innovation<br>BD Peripheral Intervention                 | November 14, 2024<br>5:00 PM, Becton Dickinson | 20         |
| Neural Microsystem Lab<br>Tour 1             | <b>Dr. Mike D'Saachs</b><br>PhD student in Dr.<br>Muthuswamy's Neural<br>Microsystems Laboratory           | February 7, 2025<br>2:30PM, ISTB1              | 6          |
| Neural Microsystem Lab<br>Tour 2             | <b>Dr. Mike D'Saachs</b><br>PhD student in Dr.<br>Muthuswamy's Neural<br>Microsystems Laboratory           | February 21, 2025<br>2:30PM, ISTB1             | 6          |
| Becton Dickinson<br>Facility Tour            | <b>Dr. Peter Crapo</b><br>R&D Staff Engineer -<br>Innovation<br>BD Peripheral Intervention                 | March 24, 2025<br>5:00 PM, Becton Dickinson    | 15         |

|                       |                                                                                                         |                                      |   |
|-----------------------|---------------------------------------------------------------------------------------------------------|--------------------------------------|---|
| Panel with Professors | <b>Dr. Sydney Schaefer, Dr. Bradley Greger, Dr. Helen Chavez</b><br>Associate Professors - SBHSE & SCAI | March 21, 2025<br>1:30 PM, Hayden C1 | 7 |
|-----------------------|---------------------------------------------------------------------------------------------------------|--------------------------------------|---|



BD Facility Tour Group Picture



BioICAS Lab Tour Group Picture

### **Highlight Industry Night Series**

This year, we continued our Industry Networking Night (INN) series that was started in Spring 2024 in collaboration with Women in Computer Science (WiCS) and the American Society of Mechanical Engineers (ASME). At each of these events, we have had multiple major companies present in the Phoenix area and beyond send representatives and recruiters to our event to speak with students and let them know of opportunities to become involved. Each INN includes 5-minute rapid-fire pitches from each company followed by an open industry mixer session. These events are hosted in order to introduce students from various engineering majors to opportunities in a wide variety of fields that they may not have thought of when picking their major originally, and being present at this event has assisted multiple students in finding internships, jobs, and partnership opportunities with these companies.

#### **BMESxASMExWiCS Industry Networking Night #2**

- a. Date: 21 October 2024
- b. Location: Memorial Union 220 Turquoise Ballroom
- c. Attendance: 45
- d. Description: The second Industry Networking Night in our series was hosted on Monday, October 21st, 2024 in collaboration with WiCS (Women in Computer Science) and ASME (American Society of Mechanical Engineers), featuring 4 major companies including BD, Gore, Biosense Webster, and General Dynamics Mission Systems.
- e. Food: Aramark Catering

Total Estimated Cost: \$170.35





### **BMESxASMExWiCS Industry Networking Night #3**

- f. Date: 8 April 2025
- g. Location: Memorial Union 228 Cochise Ballroom
- h. Attendance: 100
- i. Description: The third Industry Networking Night was hosted on Tuesday, 4/8/25 in collaboration with WiCS (Women in Computer Science) and ASME (American Society of Mechanical Engineers), featuring 7 major companies from around the Valley including BD, TGen, Gore, Biosense Webster, Taiwan Semiconductor Manufacturing Corporation (TSMC), Basata.AI, and GoDaddy.
- j. Food: 8 Domino's Pizzas requested



Total Estimated Cost: \$66.38

### IIIF. Entrepreneurship Activities

#### Abstract

The Biomedical Engineering Society at ASU has the role of the Entrepreneurial Engagement director in order to introduce students to entrepreneurship and promote an entrepreneurial mindset. Students were informed about and encouraged to participate in entrepreneurial activities both on and off campus including Devil's Invent and Hacks for Humanity. Additionally, BMES hosted multiple entrepreneurial events including a mini design competition, a presentation by a start-up guest speaker, and a collaboration speaker event with ASU programs like ASU MedTech Accelerator and HEALab. Any student interested in entering a national design competition was encouraged to join the BMES design team which meets with the goal of entering the National BMES Student Design Competition.

#### Entrepreneurship Activities Breakdown

##### **1. BMES Design Team Meeting**

- a. Date: 9/26/24
- b. Location: Zoom
- c. Attendance: 6 people
- d. Description: Preparation for the BMES design team about the competitions they can potentially participate in. The goal for this meeting was to determine what times work best for students and whether they are interested in pursuing another design competition this summer.

##### **2. Guest Speaker Dr. Brent Sebold Entrepreneurship + Innovation (E+I)**

- a. Date: 11/14/24
- b. Location: Zoom
- c. Attendance: 3 people
- d. Description: The purpose of this event is for BME students to learn about entrepreneurial resources that ASU offers. In particular, students are invited to learn about opportunities such as Venture Devils (mentorship and online training) as well as the Founders Lab, which is a Barrett Honors thesis pathway to directly launch a startup.

##### **3. BMES Design Team Meeting**

- e. Date: 2/17/25
- f. Location: ASU Classroom (SCOB 290)/Discord
- g. Attendance: 6 people
- h. Description: Preparation for the BMES design team about the competitions they can potentially participate in. The goal for this meeting was to determine what times work best for students and whether they are interested in pursuing another design competition this summer.



#### 4. Start-Up Speaker Event

- a. Date: 3/26/25
- b. Location: Zoom
- c. Attendance: 2 people
- d. Description: The purpose of this event was for BME students to learn about entrepreneurial resources that ASU offers. Dr. Visar Berisha was invited to guest speak given his experience of establishing multiple med tech startups and being the Associate Dean of Research Commercialization of FSE. This event intended to entail a presentation on how Dr. Berisha got involved in Commercialism as well as a Q&A session.



### **III.G. Other Initiatives and Activities**

The chapter has leveraged social media and cultivated an online presence to increase engagement among students and promote events. BMES at ASU uses Instagram as its primary social media platform, having phased out older formats such as Facebook that exhibited low engagement among members. The flagship BMES at ASU website is also in use, which is a custom webpage that features contact information, pictures from past events, upcoming opportunities, and a form for prospective members to get involved. The Instagram page is used to advertise upcoming events, as well as feature accomplishments of the members of the chapter. Featuring different members of the chapter on social media helps contribute to a feeling of connectedness and encourages all students to achieve to the best of their abilities. Social media engagement has remained high during this school year, with the following count up more than 4.9% since 2024. Social media is predicted to remain an instrumental tool for maintaining a connected membership body in years to come.

Additionally, due to largely virtual events and communication, inter-organizational activities were brought to attention to foster engagement. Monthly Fulton Student Council (FSC) meetings were attended to learn more about other engineering organizations' purposes and events. Through these meetings, BMES forged connections with other organizations in the Fulton schools. During the Fall and Spring semesters, BMES hosted several collaborative events with multiple FSO organizations. BMES hosted an Industry Networking Night, providing students with opportunities to interact with professionals from various fields. A Professor Roundtable event was also organized, allowing students to engage in discussions with faculty members about research opportunities and career paths. BMES expanded professional exposure through Becton Dickinson (BD) Lab Tours and ASU Faculty Lab Tours, offering students firsthand insight into both industry and academic research environments. Furthermore, a Financial Literacy Event with BME Alumni was held to educate students on financial planning and career growth after graduation. Throughout these collaborations BMES was able to build great relationships with other FSO clubs in hopes that in upcoming years we are able to host more events together. Meeting with their student body council and planning a joint event at the conclusion of the academic year, we have formed strong contacts with diverse engineering organizations for future events.

#### **IV. New BD Corporate Sponsorship**

In the 2023-2024 school year, the BMES President and Vice President successfully secured the chapter's first Platinum-level corporate sponsorship with BD (Becton Dickinson), valued at \$3000. We have updated our Sponsorship Packet for the 2024-2025 and plan to use this new version to pitch our club to additional companies with the aim of gaining further sponsorships. The Sponsorship Packet includes a Letter to Corporate Representatives, Hosted Events and Ask, Sponsorship Tiers, a Summary of Benefits, and information on how to support our club and make a donation.

For the upcoming 2025 BMES Annual Meeting, the ASU Chapter hopes to encourage all local and national members to attend the conference, as well as send officers and our new 2025-2026 Design Team to compete in the annual Medtronic Student Design Competition. We plan to use the Corporate Sponsorship to help fund chapter members for attending this conference. As always, all students are also encouraged to present their research at the conference and ASU's Chapter will provide its members with the resources necessary to apply for and participate in the conference.

For the end of the year celebration, BMES hosted a banquet to include the officers of the club, advisors, and the sponsors of BMES, BD Corporate. During the banquet, BD was given a gift basket for their appreciation for their financial support and resources this 2024-2025 year. This banquet allowed for deeper connections to our sponsors and networking. Due to their donation, BMES was able to acquire officer polos which allowed our officers to translate a more professional image.

Click [\[Here\]](#) to Access our 2024-2025 Sponsorship Packet



Corporate Sponsorship Packet  
Biomedical Engineering Society  
Arizona State University  
2024-2025

### **2024 National BMES Meeting**

Attending the 2024 BMES Annual Meeting in Baltimore, MD was a transformative experience for the Biomedical Engineering Society at ASU, equipping our executive board with fresh perspectives, valuable connections, and actionable ideas to strengthen our chapter. Over the course of four days, we explored cutting-edge advancements in biomedical engineering—including innovations in prosthetics, neural stimulation, and wearable sensor technologies—while attending workshops and technical sessions led by industry experts and academic leaders. As one of the few student chapters representing the Southwest, we took pride in sharing our chapter's progress and learning from the experiences of peer institutions across the country.

One of the most impactful aspects of the conference was the opportunity to network with student leaders from top universities such as Johns Hopkins, Georgia Tech, and UC San Diego. Through leadership roundtables and collaborative student sessions, we exchanged ideas about mentorship models, community outreach, and alumni involvement. These conversations inspired us to revamp our own mentorship program by introducing a workshop-based format instead of relying on personal meetings—ensuring more consistent and motivated engagement between mentors and mentees throughout the semester. We also expanded our outreach efforts by partnering with local schools and other student organizations, incorporating STEM activities and biomedical demos modeled after what we observed during the conference's outreach presentations.

Additionally, the conference underscored the importance of building long-term alumni relationships. Inspired by success stories shared by other chapters, we launched a senior exit survey aimed towards allowing future BMES boards to reconnect with past members, who would be an incredible resource as speakers and guests for our future events. These initiatives have already helped us grow our professional network and offer students a clearer picture of diverse post-graduate pathways.

Thanks to the generous support of Becton Dickinson, we were able to send five officers to this national event. The experience not only deepened our knowledge and broadened our perspectives, but also empowered us to bring back tangible improvements that will continue to elevate BMES at ASU for years to come. The connections we made, ideas we gathered, and inspiration we gained are already shaping the next chapter of our organization's growth and impact. Below we have provided two images of our Officer representatives at the 2024 BMES Annual Meeting.







## **V. Future Directions**

The chapter has made great advances with hosting both professional and social events for undergraduate students. This year we ensured that attendance was consistent and members received a lot of support. This engagement was achieved by hosting a variety of events that cater to members' different interests and collecting and implementing feedback from them. An integral part of the success of the chapter is a dedicated officer board that has open communication with one another. By doing team building and creating a collaborative environment, more ideas were generated and more events were hosted. We plan to host more strategic team-building activities, such as socials and game nights, to bring our Officer Board closer together and boost team synchrony. In the near future, this chapter hopes to further engage in initiatives that support minority students in STEM. This year, our chapter hosted multiple collaborative social events with other organizations and hopes to increase inter-club events in the future to facilitate networking. Collaborations will be expanded with the Society of Hispanic Professional Engineers, Society of Women Engineers, National Society of Black Engineers, and Women in Computer Science to promote STEM in underrepresented populations. We also plan to scale-up our events to accommodate the increasing number of members by applying for club scholarships and hosting fundraisers. Next year, we plan to launch a new T-shirt Design Competition for our students to compete in, and use the winning design on our new set of BMES at ASU t-shirts. We also plan to utilize our updated Sponsorship Packet to build more industry connections and secure additional sponsorships to fund future club initiatives. In addition, after continuing our cross-club Industry Networking Night series at ASU in order to introduce students of different majors to opportunities in a diverse array of fields, we are excited to further pursue making connections with both other clubs on campus and industry partners. We plan to host an Officer Transition Meeting in May for outgoing officers to relay their experiences and what they have learned to the incoming officers, preparing them to succeed in their role and build upon their plans for next semester.



BMES Officer Board Group Picture